

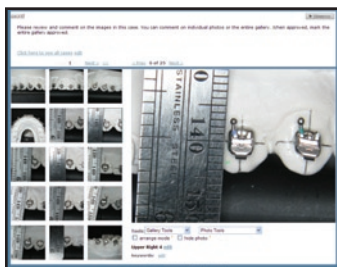


**The Cover**

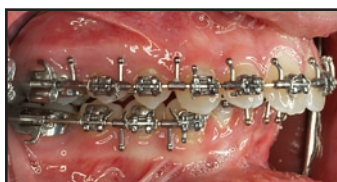
This month's cover shows torque control using miniscrew anchorage, as described in the article by Drs. Kook, Kim, and Mo.



557 Lingual Frenum



572 Indirect Bonding



591 Brachyfacial Class II

**DEPARTMENTS**

The Editor's Corner . . . 545  
 Continuing Education . . 581  
 Contributors' Guide . . . 590  
 Product News . . . . . 600  
 Classified. . . . . 601  
 Index of Advertisers . . . 603

**OVERVIEW**

**The Lingual Frenum**

MICHAEL E. NORTH CUTT, DDS

The contribution of an aberrant lingual frenum to malocclusion is examined in a preliminary study of 600 pedodontic patients.

**557**

**A Simple Technique for Independent Torque Control with Miniscrew Anchorage**

YOON-AH KOOK, DDS, MSD, PHD  
SEONG-HUN KIM, DMD, MSD, PHD  
SUNG-SEO MO, DDS, MSD, PHD

Specially designed miniscrews can serve as anchorage for controlled root movement.

**566**

**The AccuBond System for Indirect Orthodontic Bonding**

MICHAEL C. ALPERN, DDS, MS  
CAROLYN PRIMUS, PHD  
ADA HINDA ALPERN, RDH

The authors present a single-tray system that allows immediate placement of full-size wires.

**572**

**The Readers' Corner**

JOHN J. SHERIDAN, DDS, MSD

This month's topics are self-ligating brackets and doctors' vacation time.

**577**

**Treatment of Severe Maxillary Crowding Using Invisalign and Fixed Appliances**

ALDO GIANCOTTI, DDS  
RAFFAELLA DI GIROLAMO, DDS

Using bracketed appliances before or after aligners can be a viable option in adult crowding cases.

**583**

**CASE REPORT**

**Maximizing Facial Esthetics in a Brachyfacial Class II Deep-Bite Case**

KIAVASH KEVIN BADI, DDS  
FLAVIO URIBE, DDS, MDS  
RAVINDRA NANDA, BDS, MDS, PHD

Postsurgical mechanics are shown for predictable leveling and stabilization.

**591**

The opinions expressed in the *Journal of Clinical Orthodontics* are those of the writers and do not necessarily reflect the opinions and policies of JCO. Copyright © 2009 JCO, Inc. *Journal of Clinical Orthodontics* (USPS 802-120, ISSN 0022-3875) is published monthly for \$235 per year (U.S. individual rate) by JCO, Inc., 1828 Pearl St., Boulder, CO 80302-5519. Periodicals postage paid at Boulder, CO, and additional mailing office. POSTMASTER: Send address changes to JCO, 1828 Pearl St., Boulder, CO 80302-5519. Phone: (303) 443-1720; e-mail: info@jco-online.com.